

# Liquid Ammonium Sulfate (LAS) Feed System

IMS Provides Modular Ammonium Sulfate Upflow Saturator and Feed Systems for Water Processes (Pre-Assembled, Piped, Wired, and Factory Tested)

## Liquid Ammonium Sulfate Feed System

- Superior up-flow saturator design
- Compact, fully-contained system
- Automatic saturator operation
- Integrated control panel

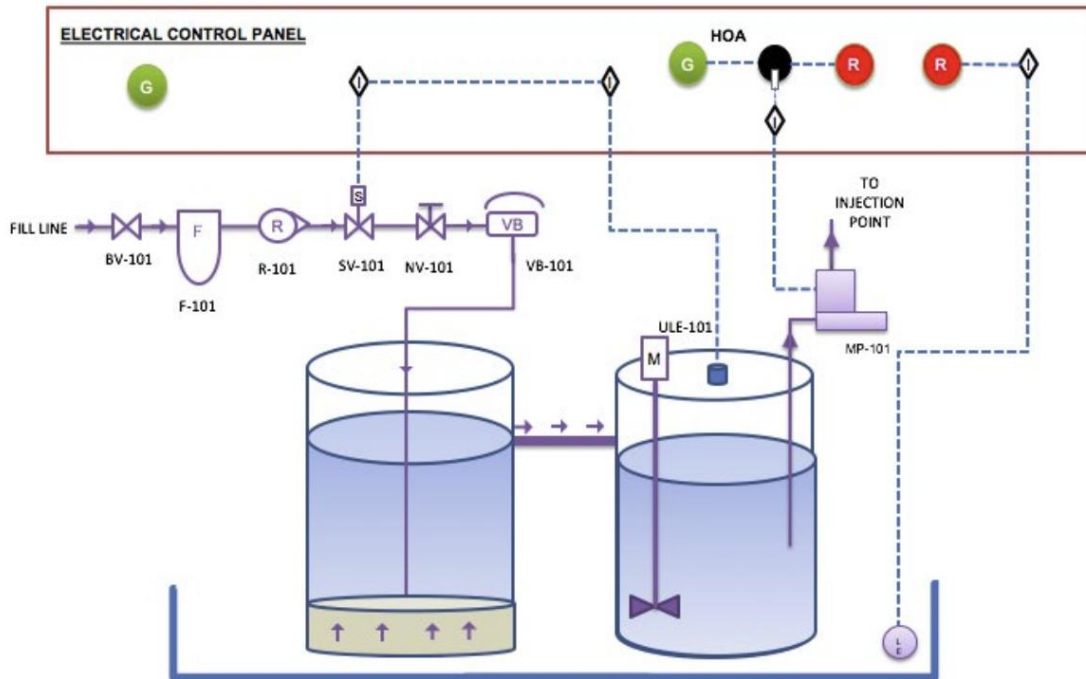


## Modular Liquid Ammonium Sulfate Feed System With Enclosure

- Ideal for outdoor and remote locations
- FRP shelter houses equipment in weatherproof enclosure
- Complete with lighting, ventilation fan, breaker panel



## Process and Instrumentation



System Features	System Benefits
<b>Superior Up-flow Saturator Design</b>	<ul style="list-style-type: none"> <li>Ensures complete saturation, high degree of reliability, and very low maintenance requirements</li> </ul>
<b>Separate Saturator and Solution Tanks</b>	<ul style="list-style-type: none"> <li>Reduces or eliminates suspended solids in the solution tank and prevents dosing pump from plugging</li> </ul>
<b>Modular, Pre-assembled, Factory Piped, Wired, and Tested System with Compact Design (5.5'L x 5.75'H x 2.5'W)</b>	<ul style="list-style-type: none"> <li>Very short installation time and low installation cost</li> <li>Reduces capital investment because of easy relocation, if desired</li> <li>Requires small footprint for installation</li> <li>Factory tested before delivery, significantly reducing system start-up time (~2 hrs)</li> </ul>
<b>Optional Skid-Mounted Equipment Enclosures Available</b>	<ul style="list-style-type: none"> <li>Ideal for outdoor and remote locations</li> <li>FRP shelter houses equipment in weatherproof enclosure to protect from outdoor environment</li> <li>Complete with lighting, ventilation fan, breaker panel</li> </ul>
<b>Custom Designed System</b>	<ul style="list-style-type: none"> <li>Meets site specific requirement and provides desired features</li> </ul>
<b>Fully Contained System</b>	<ul style="list-style-type: none"> <li>Eliminates any risk of liquid ammonium sulfate solution entering floor drains</li> </ul>
<b>Saturator Automatic Operation</b>	<ul style="list-style-type: none"> <li>Level controls are pre-set to allow smooth saturator operation</li> </ul>
<b>Integrated Control Panel</b>	<ul style="list-style-type: none"> <li>Single point of connection by installer</li> </ul>

---

## **cleanwater1**

13135 Danielson Street, Suite 204 | Poway, CA 92064

Tel: 858.486.1620 | Email: [info@cleanwater1.com](mailto:info@cleanwater1.com)

## **cleanwater1.com**

© 2025 Cleanwater1, Inc. Subject to change without prior notice.

The information provided in this literature contains merely general descriptions or characteristics of performance which in actual case of use do not always apply as described or which may change as a result of further development of the products. An obligation to provide the respective characteristics shall only exist if expressly agreed in the terms of a written contract.