

Liquid Ammonium Sulfate (LAS) Feed System

IMS Provides Modular Ammonium Sulfate Upflow Saturator and Feed Systems for Water Processes (Pre-Assembled, Piped, Wired, and Factory Tested)

Liquid Ammonium Sulfate Feed System

- Superior up-flow saturator design
- Compact, fully-contained system
- Automatic saturator operation
- Integrated control panel

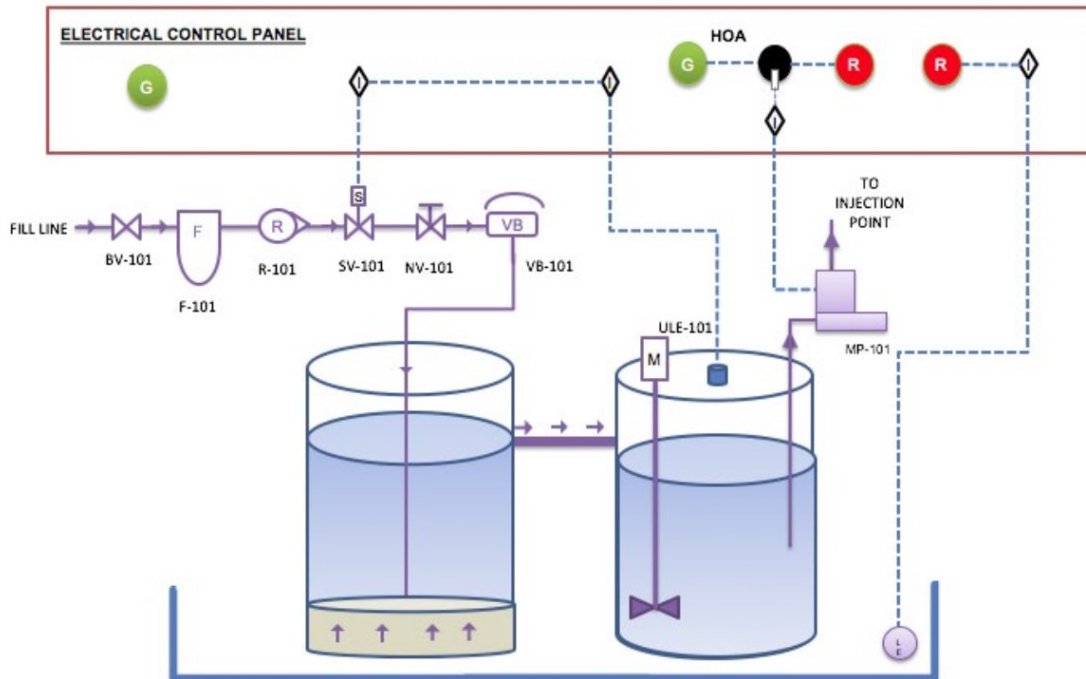


Modular Liquid Ammonium Sulfate Feed System With Enclosure

- Ideal for outdoor and remote locations
- FRP shelter houses equipment in weatherproof enclosure
- Complete with lighting, ventilation fan, breaker panel



Process and Instrumentation



System Features	System Benefits
Superior Up-flow Saturator Design	<ul style="list-style-type: none"> Ensures complete saturation, high degree of reliability, and very low maintenance requirements
Separate Saturator and Solution Tanks	<ul style="list-style-type: none"> Reduces or eliminates suspended solids in the solution tank and prevents dosing pump from plugging
Modular, Pre-assembled, Factory Piped, Wired, and Tested System with Compact Design (5.5'L x 5.75'H x 2.5'W)	<ul style="list-style-type: none"> Very short installation time and low installation cost Reduces capital investment because of easy relocation, if desired Requires small footprint for installation Factory tested before delivery, significantly reducing system start-up time (~2 hrs)
Optional Skid-Mounted Equipment Enclosures Available	<ul style="list-style-type: none"> Ideal for outdoor and remote locations FRP shelter houses equipment in weatherproof enclosure to protect from outdoor environment Complete with lighting, ventilation fan, breaker panel
Custom Designed System	<ul style="list-style-type: none"> Meets site specific requirement and provides desired features
Fully Contained System	<ul style="list-style-type: none"> Eliminates any risk of liquid ammonium sulfate solution entering floor drains
Saturator Automatic Operation	<ul style="list-style-type: none"> Level controls are pre-set to allow smooth saturator operation
Integrated Control Panel	<ul style="list-style-type: none"> Single point of connection by installer

cleanwater1

13135 Danielson Street, Suite 204 | Poway, CA 92064

Tel: 858.486.1620 | Email: info@cleanwater1.com

cleanwater1.com

© 2025 Cleanwater1, Inc. Subject to change without prior notice.

The information provided in this literature contains merely general descriptions or characteristics of performance which in actual case of use do not always apply as described or which may change as a result of further development of the products. An obligation to provide the respective characteristics shall only exist if expressly agreed in the terms of a written contract.