

Aqueous Ammonia Feed System

IMS Provides Modular Aqueous Ammonia Solution and Feed Systems for Water Processes (Pre-Assembled, Piped, Wired, and Factory Tested)

Skid-Mounted Ammonia Feed System

- Heavy-duty, 62 psig pressure rated solution storage tank
- Built-in ammonia fume adsorber
- Fully contained system (secondary containment)

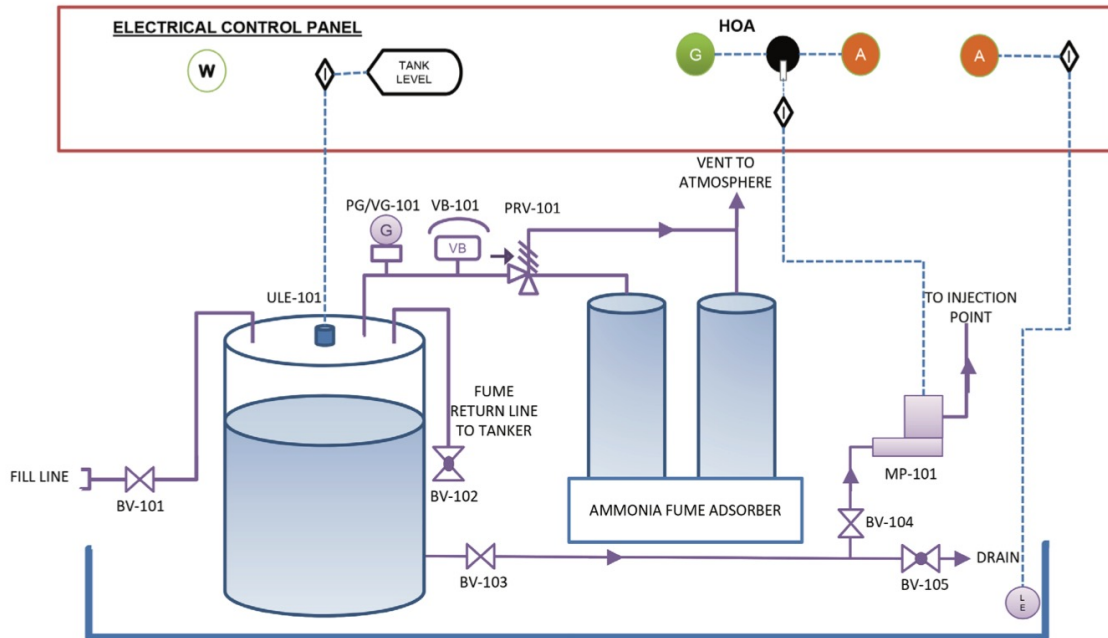


Skid-mounted Ammonia Feed System With Enclosure

- Ideal for outdoor and remote locations
- FRP shelter houses equipment in air-conditioned environment
- Complete with lighting, ventilation fan, breaker panel



Process and Instrumentation



System Features	System Benefits
Heavy Duty, 62 psig Pressure Rated Solution Storage Tank	<ul style="list-style-type: none"> • DOT authorized 428 kPa (62 psi) pressure rating • Heavy duty cylindrical tank provides superior structural integrity
Built-in Ammonia Fume Adsorber	<ul style="list-style-type: none"> • Prevents ammonia fumes' release to the atmosphere (no odor complaints)
Modular, Factory-assembled and Tested System with Compact Design	<ul style="list-style-type: none"> • Pre-piped and wired for easy, low-cost installation • Modular, portable design for easy relocation • Compact small footprint (7 ft x 4 ft x 5 ft ht)
Optional Skid-Mounted Equipment Enclosure Available	<ul style="list-style-type: none"> • Ideal for outdoor and remote locations • FRP shelter houses equipment in air-conditioned environment to prevent ammonia vapor formation • Complete with lighting, ventilation fan, breaker panel
Automatic Peristaltic Metering Pump with Large Turn Down Ratio	<ul style="list-style-type: none"> • Metering pump capable of receiving and sending remote signals (4 to 20 mA input/output, remote start-stop, alarms) • Robust design (with <i>very low maintenance</i> requirement)
Fully Contained System Automatic Level	<ul style="list-style-type: none"> • Eliminates any risk of Ammonium Hydroxide solution entering floor drains • High level switch in containment structure for local and remote alarm
Automatic Level Indication	<ul style="list-style-type: none"> • Equipped with ultrasonic level sensor with local display and remote transmission capability
Integrated Control Panel	<ul style="list-style-type: none"> • Single point of connection by installer

cleanwater1

13135 Danielson Street, Suite 204 | Poway, CA 92064

Tel: 858.486.1620 | Email: info@cleanwater1.com

cleanwater1.com

© 2025 Cleanwater1, Inc. Subject to change without prior notice.

The information provided in this literature contains merely general descriptions or characteristics of performance which in actual case of use do not always apply as described or which may change as a result of further development of the products. An obligation to provide the respective characteristics shall only exist if expressly agreed in the terms of a written contract.